

Supporting hardware and software for The Enabler system

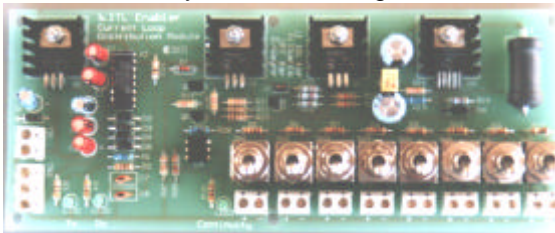
Overview

There are a number of hardware and software modules available for enhancing The Enabler. Specific modules are provided to cover the common requirements in the field and are all specially designed to work with the Enabler PC card and software.

Forecourt Distribution Modules

A range of active modules for specific pump types is available as well as passive types. All modules support up to eight physical connections.

Active modules provide physical conversion for some technologies such as current loop as well as forecourt wiring termination and isolation. Passive units provide an effective way to terminate and isolate bulky forecourt wiring.



(Optional Current Loop FDM illustrated)

All modules are supplied in PCB form for convenient mounting in the switchboard area or in existing housings. Modules are all 75mm by 185mm and will mount in off the shelf housings from various suppliers.

Active Forecourt Distribution Modules are available for Gilbarco, Dresser Wayne, Tokheim, Email Australia, NZ Protocol and passive units are available for IFSF and Tatsuno. Each single channel unit supports up to eight physical connections.

Managers Application

Pump		Total				Footpad	
Name	Grade	Quantity	Value	Volume	Cost	Quantity	Value
Adv. MPP 1	DNG	2	16.40	25.29	0.00	2	16.40
Adv. MPP 1	Unleaded	3	11.15	11.77	0.00	2	8.75
Adv. MPP 2	DNG	2	13.95	21.52	0.00	2	13.95
Adv. MPP 2	Premium	2	3.49	3.69	0.00	2	3.49
Adv. MPP 2	Unleaded	2	14.67	15.47	0.00	1	12.70
MPPin1	Diesel	4	19.97	36.41	0.00	4	19.97
MPPin1	Unleaded	3	18.80	19.84	0.00	2	17.14
MPPin2	DNG	2	7.12	10.99	0.00	2	7.12
MPPin2	Premium	4	42.04	42.97	0.00	4	42.04
MPPin2	Unleaded	2	1.73	1.82	0.00	1	0.37
Totals		27	160.54	205.33	0.00	23	153.16

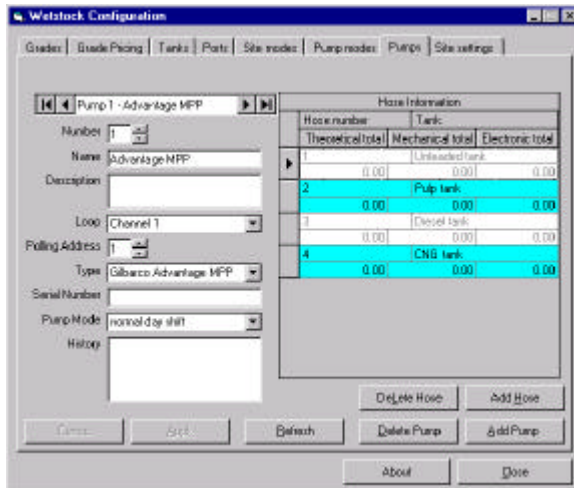
(Managers Application included in licence)

The Managers Application provides a Site Manager with the ability to change key elements of the system that don't affect basic operations as well as the ability to view, filter and print key sales data from the system.

Detailed reports can be printed covering many aspects of the system. This includes the ability to focus on specific shifts, grades, pumps and events.

Pump		Total			
Name	Grade	Quantity	Value	Volume	Cost
Adv. MPP 1	CNG	2	3.28	5.06	0.00
Adv. MPP 1	Diesel	1	1.07	1.95	0.00
Adv. MPP 1	Premium	1	3.30	3.38	0.00
Adv. MPP 1	Unleaded	7	12.35	1023.01	0.00
Adv. MPP 2	Diesel	1	6.95	12.67	0.00
Adv. MPP 2	Premium	3	5.75	5.87	0.00
Adv. MPP 2	Unleaded	4	5.84	6.14	0.00
Totals		19	38.54	1058.08	0.00

Configuration Application



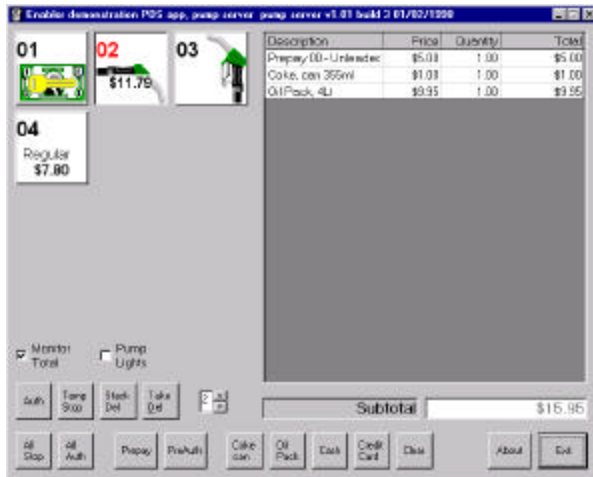
(Configuration Application included in licence)

The Configuration Application provides a convenient way to set-up and change key database values used in the Enabler system. Its has screens for various databases all grouped logically together.

This includes key elements such as Pumps, Tanks and Grades.

Demonstration POS Application

(Demonstration POS included in Developer's kits)

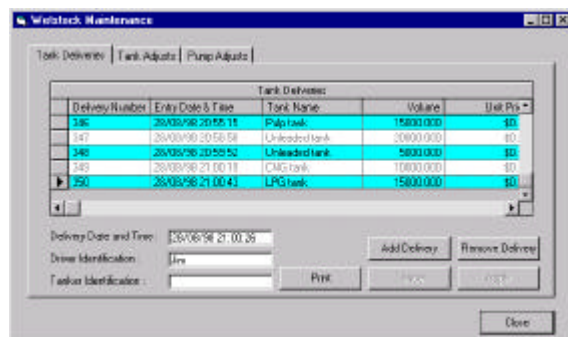


The demonstration POS application (in both VB and Delphi versions) is designed to show developers and end users how the ActiveX layer of the Enabler system can be used in its "visible" mode. The

application allows fuel sales and sample dry stock sales to be processed using a mouse or touch screen.

The Enabler controls functions exactly as they would in a real application and provide full control over the demonstration forecourt environment when used with ITL's MPD simulator or live pumps.

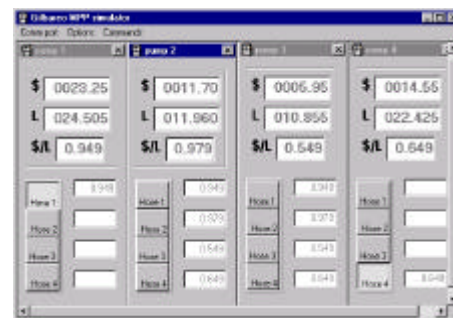
Wetstock Management Application



(Wetstock Management Application included in licence)

This application allows the entry of fuel deliveries, tank dips and meter readings into the system where these have to be captured manually.

Software MPD simulator



(Software MPD simulator included in Developer's kits)

ITL has developed an MPD software simulator that is available to Enabler system integrators and developers for test and demonstration purposes. The simulator implements all common MPD functionality and allows the setting up of multiple pumps.

Integration Technologies Limited

Level 7, AXA Centre, Fitzherbert Avenue,
Palmerston North, New Zealand

Tel: +64 6 355 1546; Fax: +64 6 355 1547;
Email: Sales@integration.co.nz; Web: www.integration.co.nz

"Tools for Systems Integrators"